

VISUAL APPROACH

Public Air Traffic

AD 2 - VMMC - 73

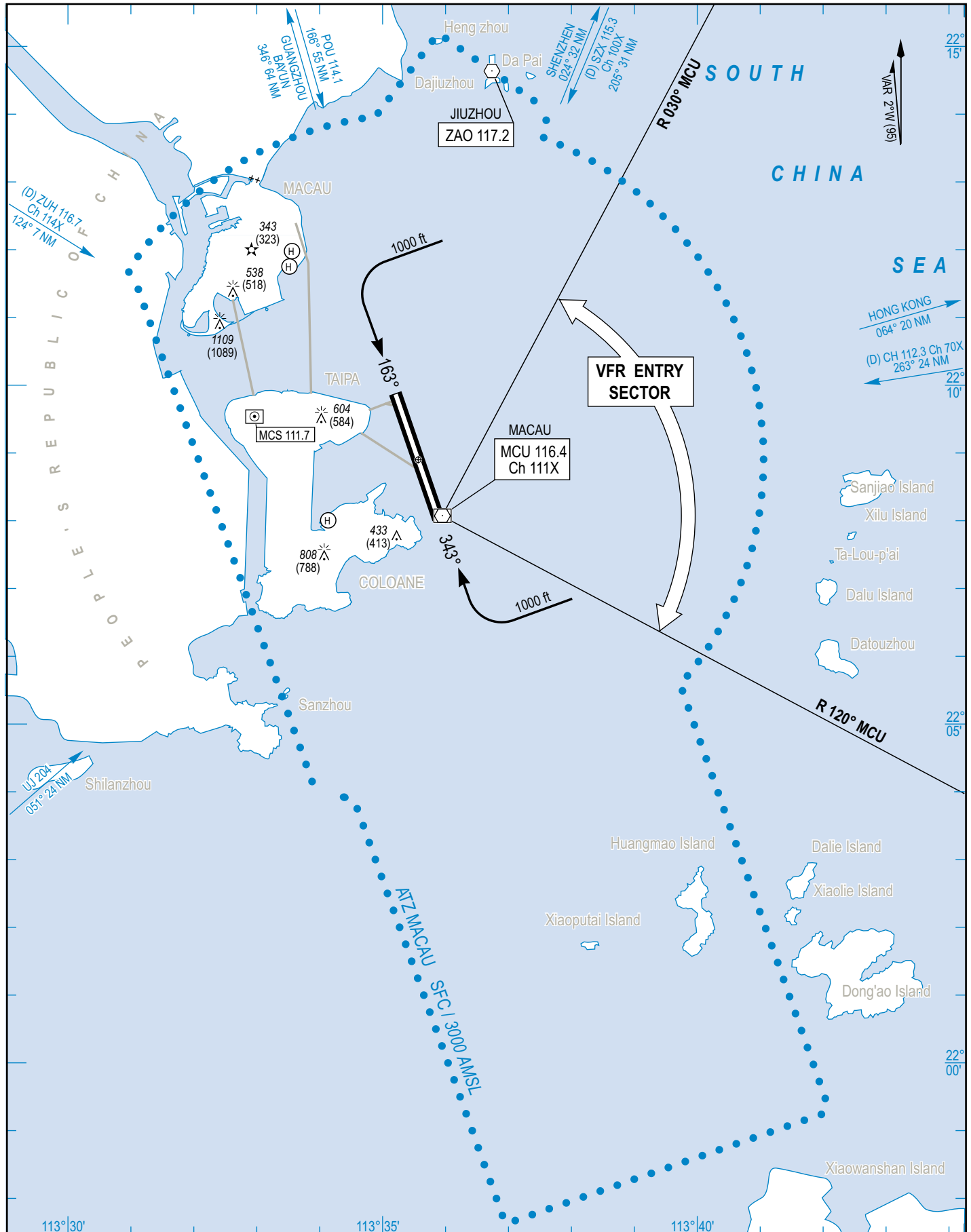
03 MAY 2001

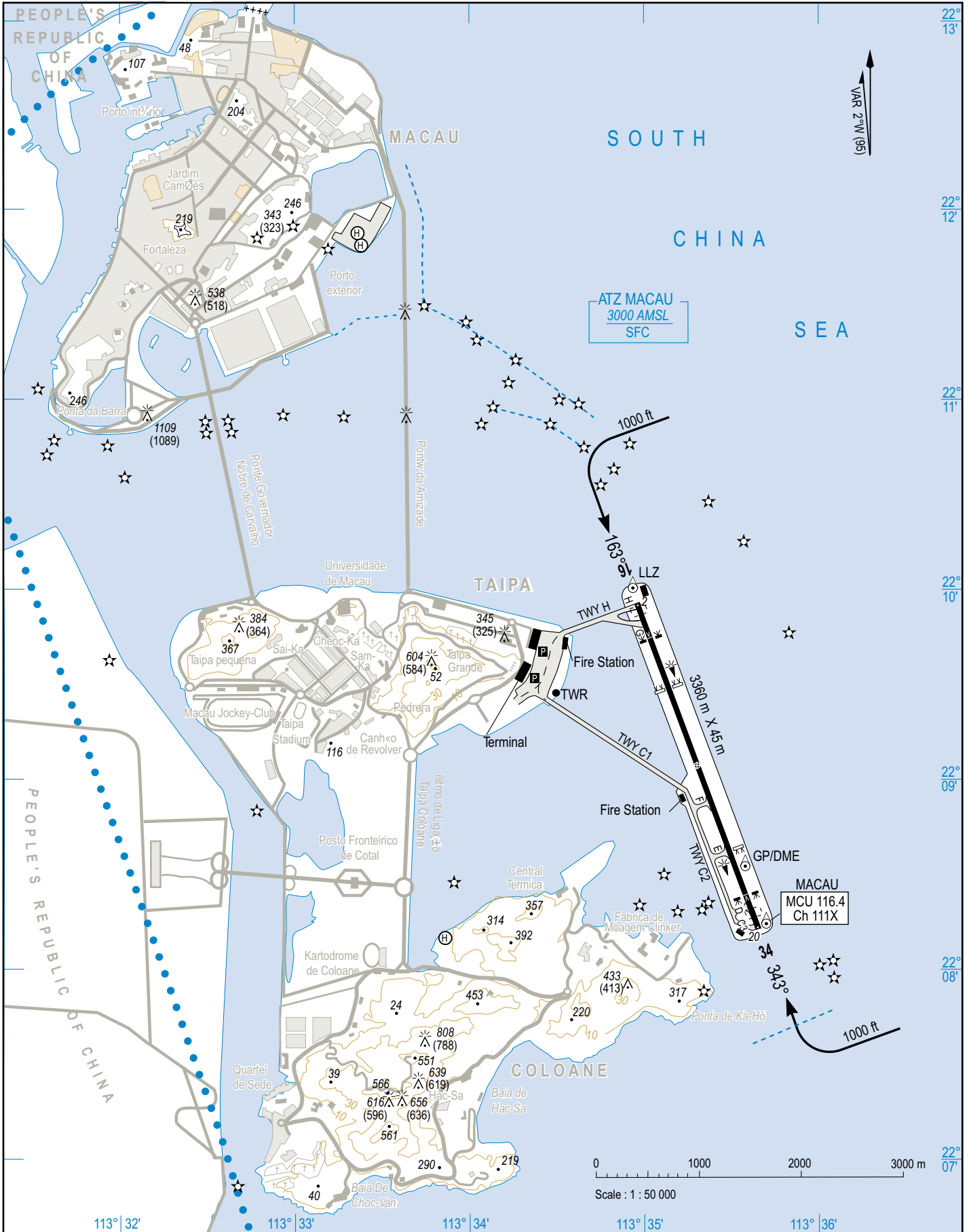
Bearings are magnetic
Altitudes and Elevations in Feet
AD ELEV : 20 (1hPa)



LAT : 22° 08' 58" N
LONG : 113° 35' 29" E

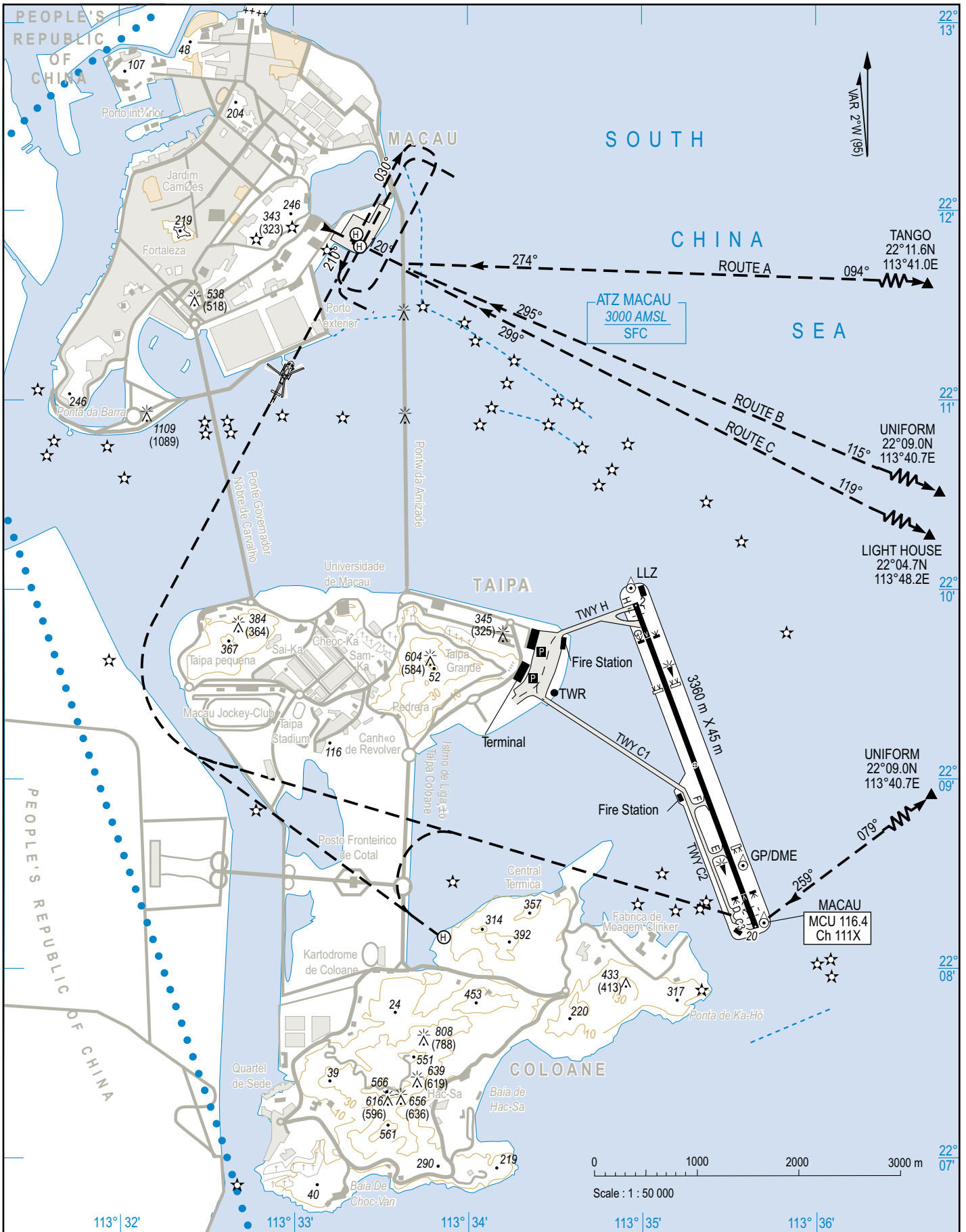
ATIS MACAU : 126.4
TWR MACAU : 118.0
GROUND MACAU : 121.725 - 121.975



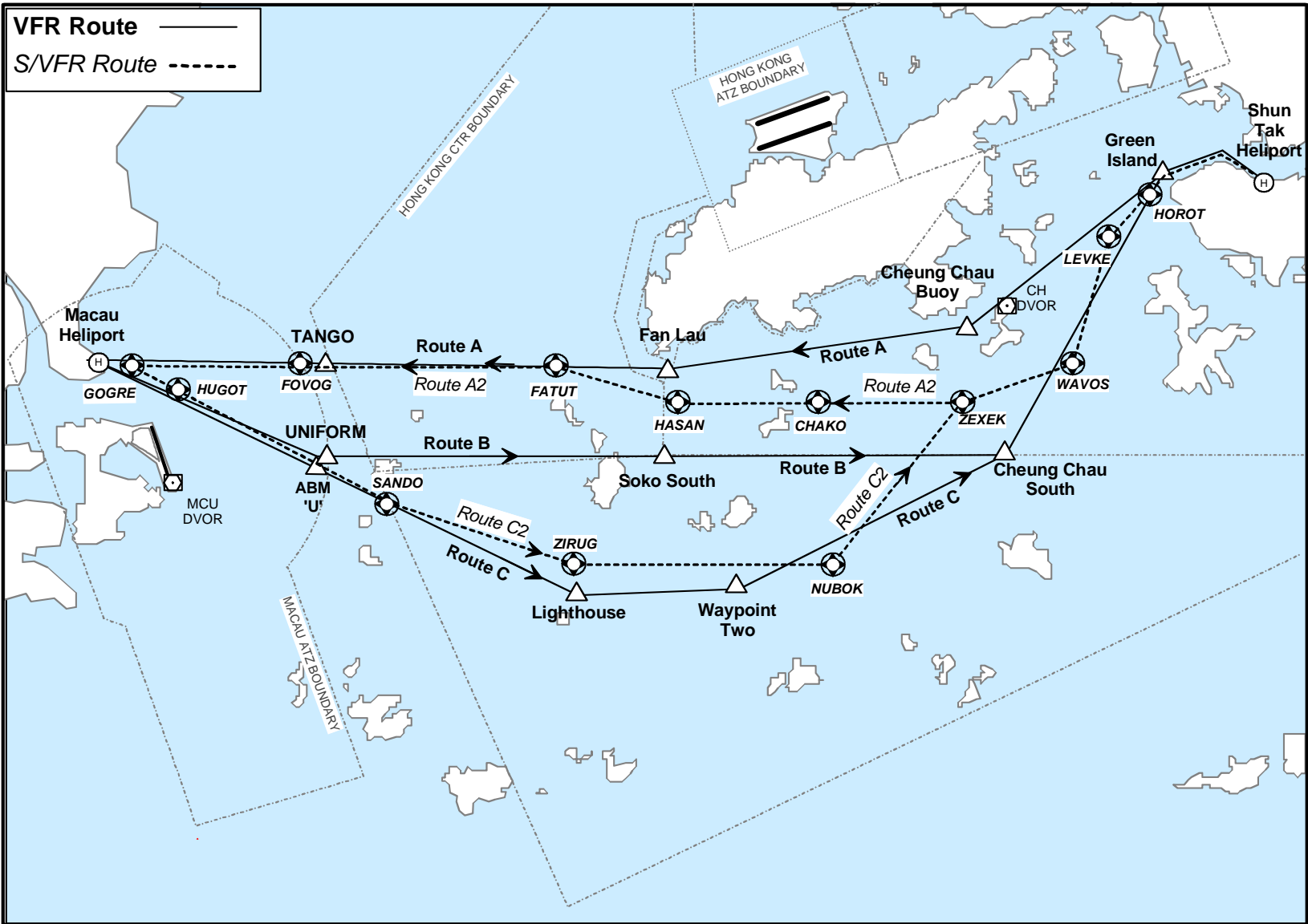


RWY	QFU	Dimension	Surface	Strength	TORA	TODA	ASDA	LDA
16	163°	3360 x 45	Concrete	PCN	3225	3285	3285	2865
34	343°	3360 x 45		63 / R / B / W / T	3300	3360	3360	2930

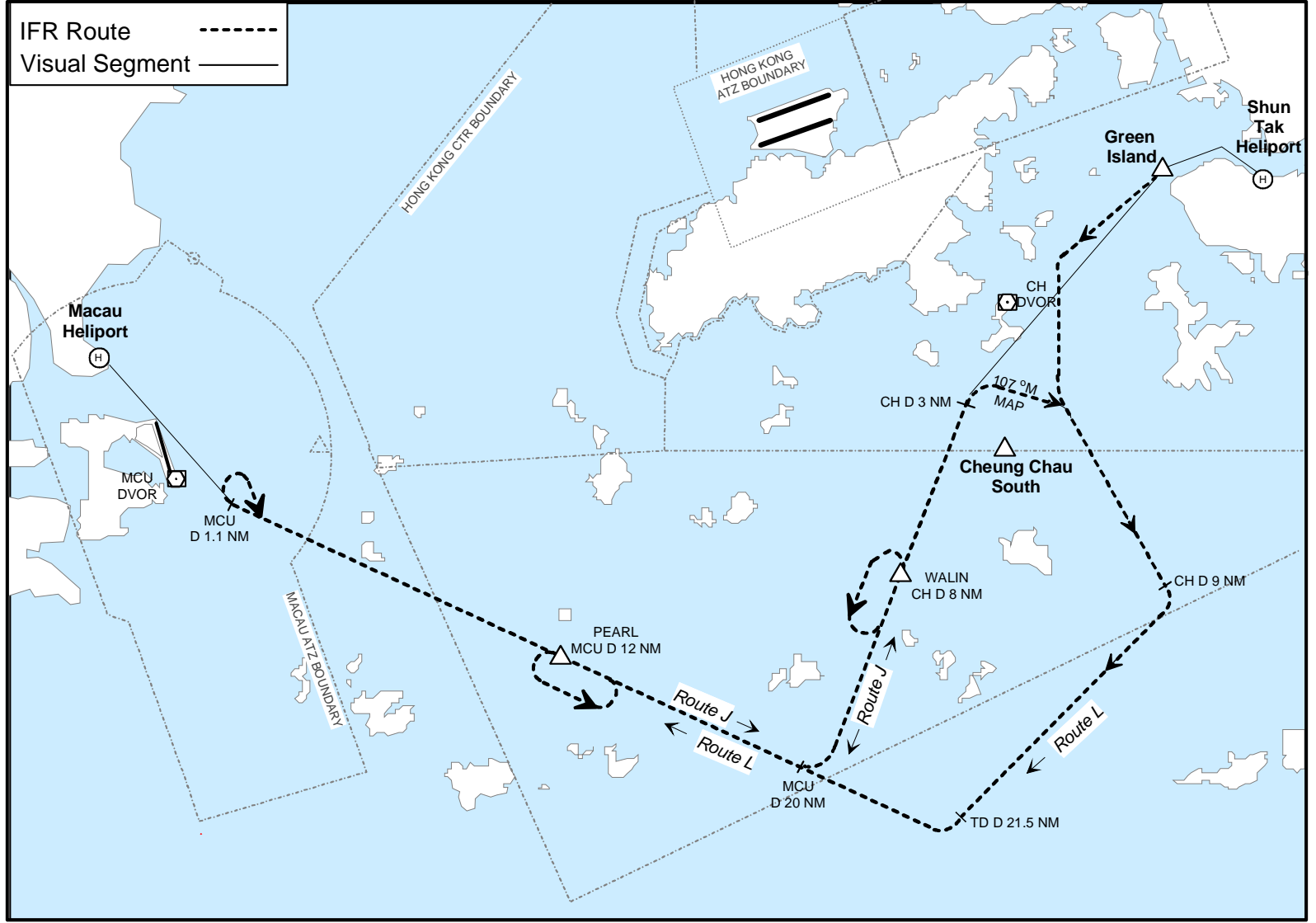
Lighting aids : RWY 16 : LIH - Threshold F LIH - Approach line W LIH - PAPI 3° (5.24%) MEHT 70 ft
 RWY 34 : LIH - Threshold F LIH - Approach line W LIH - PAPI 3° (5.24%) MEHT 65 ft



Hong Kong - Macau VFR/SVFR Helicopter Routes



Hong Kong - Macau IFR Helicopter Routes



22/07/02